

Introduction

In order to cater for everyone with differing levels of computer knowledge, this guide goes into a lot of detail and therefore looks rather large. It should only take a few minutes to complete the installation and the steps are straight forward, so don't panic or be put off with the 25 pages.

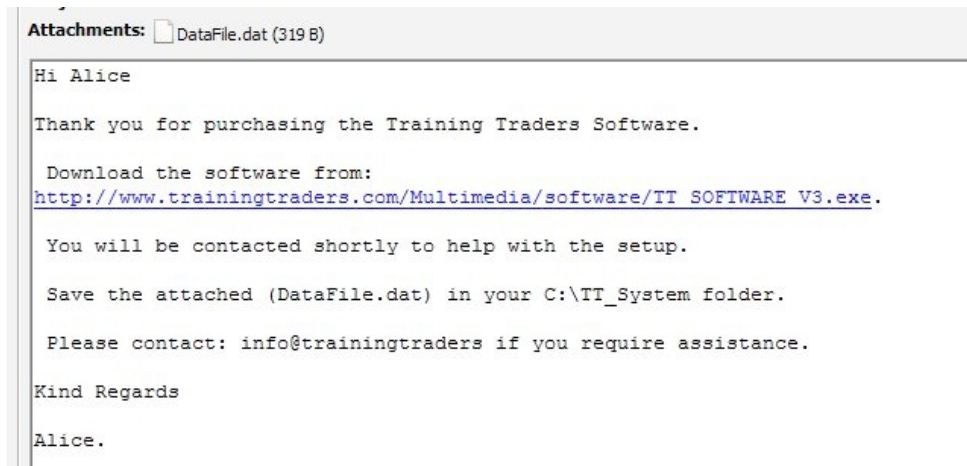
If you have difficulties please email: info@trainingtraders.com

1. Downloading the Software

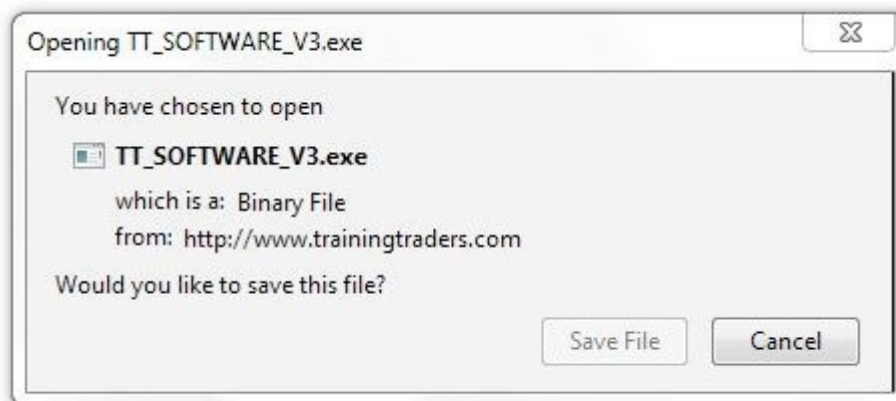
After your purchase you will receive an email from 'alice@trainintraders.com'.

Alice is an automated delivery service, please do not reply to the email, any questions should be sent to info@trainintraders.com.

The email from Alice contains a link to download the software from. Click on the link and the software will download.

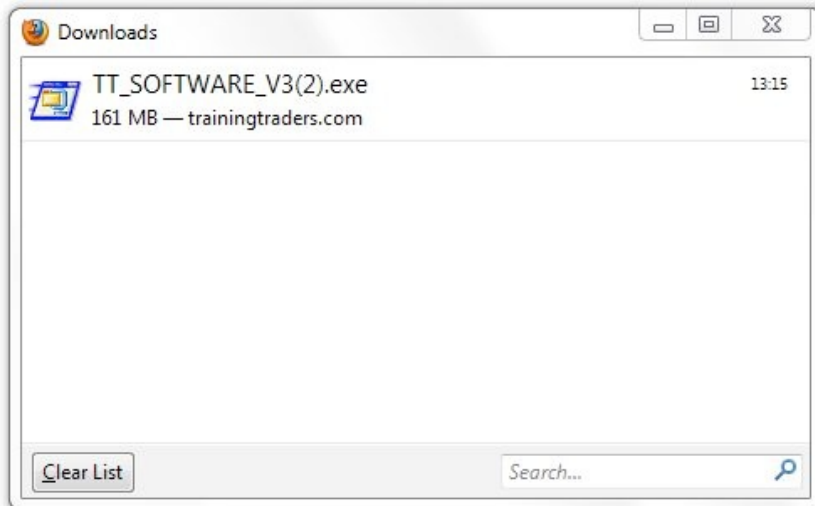


Depending upon the web browser files are downloaded differently, usually to a 'download' folder. The example below is from Firefox.

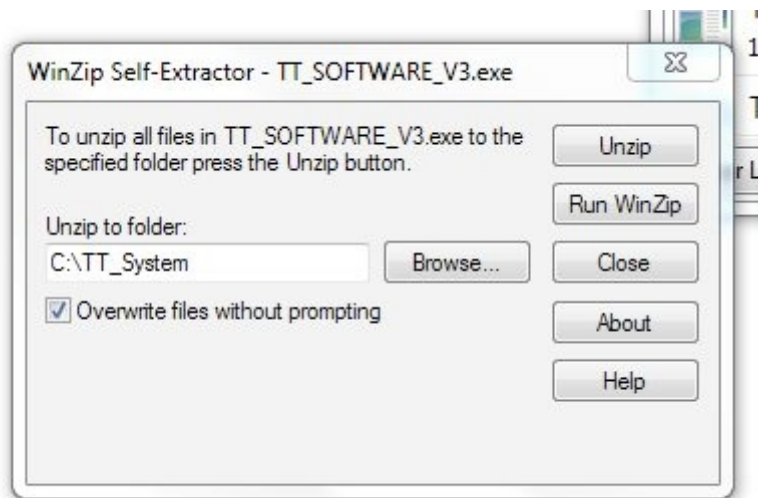


Note: Some antivirus software blocks executable files. If you have an issue, turn off your antivirus, download the file then turn your antivirus back on.

Locate the downloaded file (often the browser automatically displays the download folder). Double click on the file to run it.

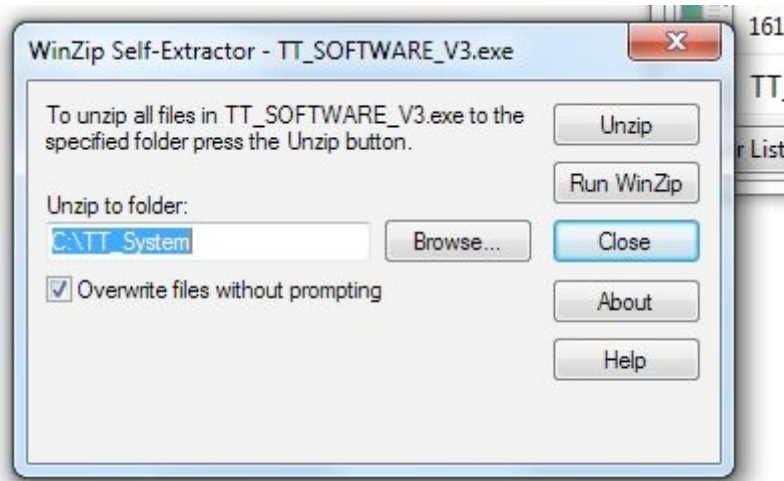


The software is in a self extracting zip which creates the folder C:\TT_system to hold the software. It is vital that this folder has this name and location, so do not change the setting.



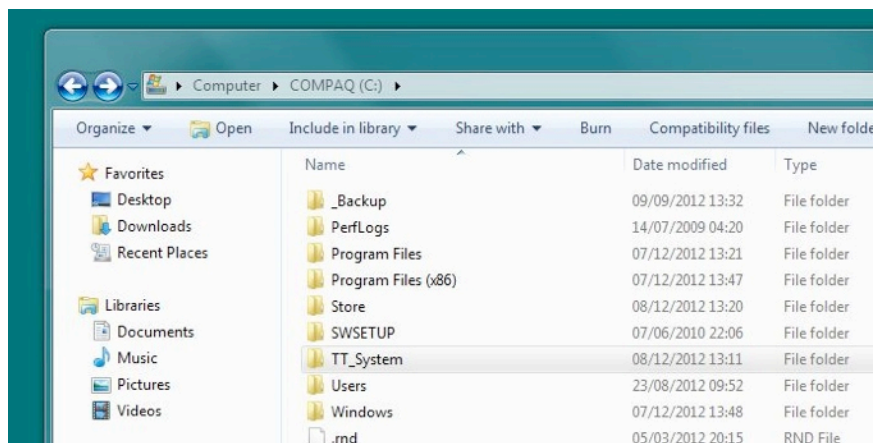
Click on the Unzip button.

Once the Unzip is done click on the Close button.

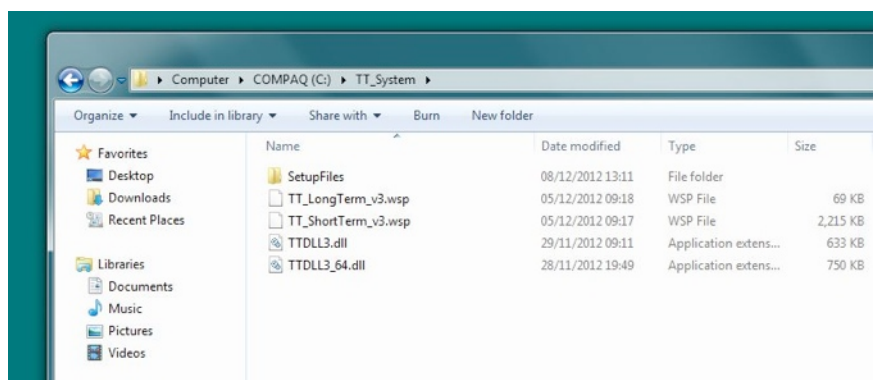


2. Check TT_System folder and PC configuration

Check that the TT_System folder is correctly added on you C: drive (C:\TT_System).

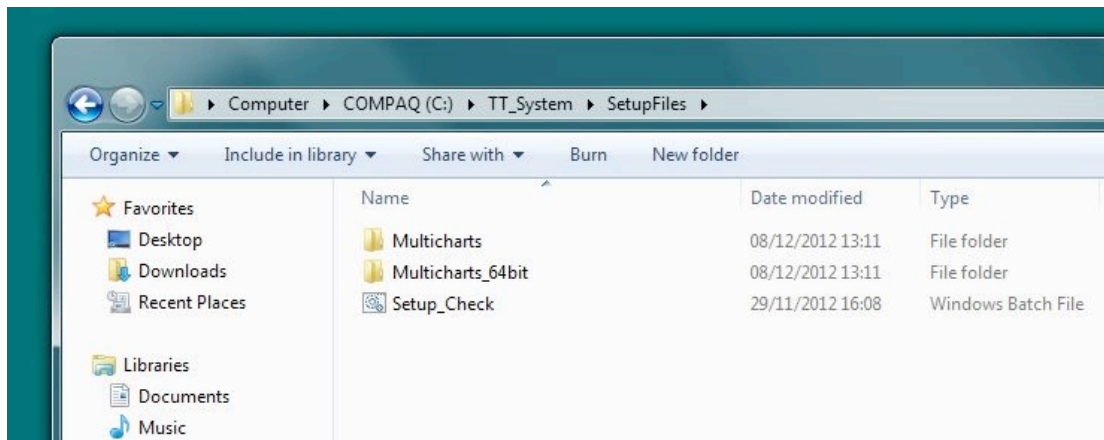


Double click on the folder to open it.

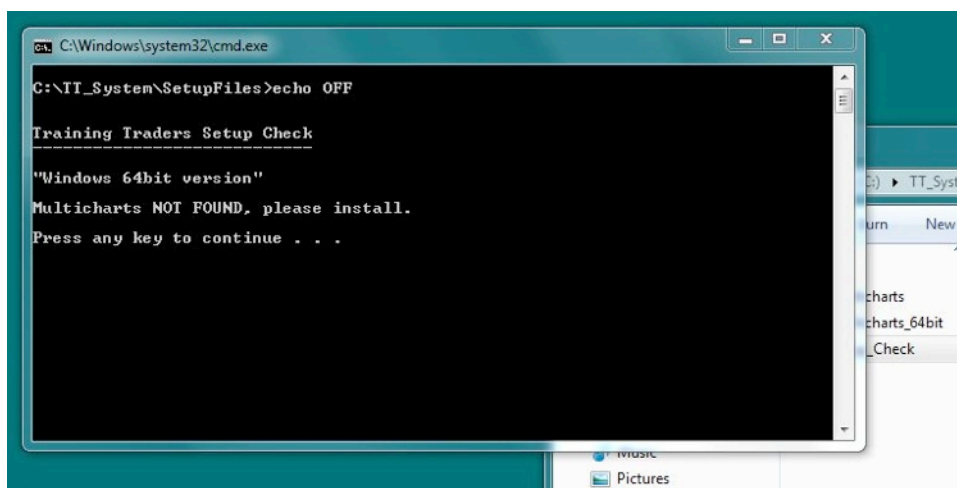


Double click on the 'SetupFiles' folder to enter it.

There are 32 bit and 64bit version of Windows and Multicharts, we have included setup files for 32 bit and 64 bit versions. Double click on the 'Setup_Check' file.

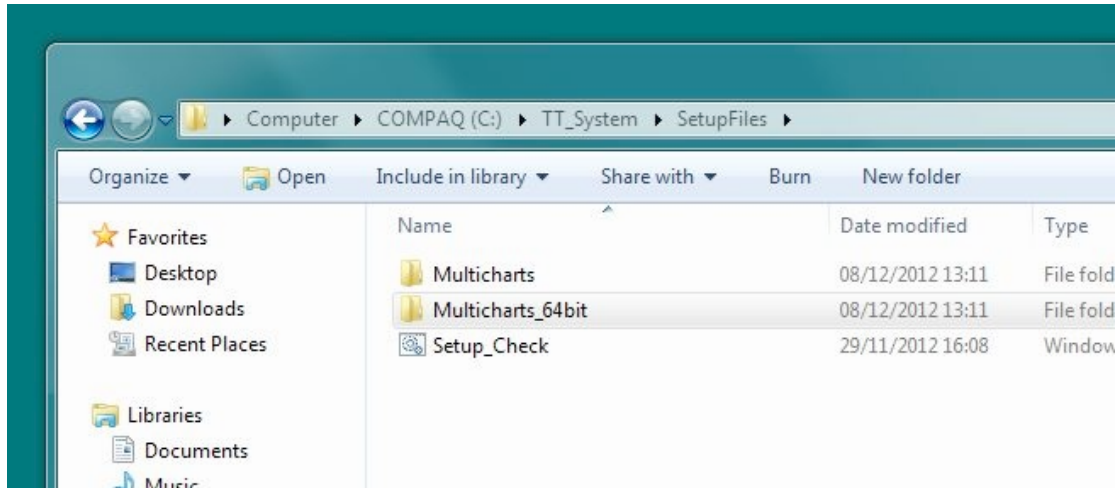


The Setup_Check will tell you which version of windows you have installed and which version of Multicharts (if any).



If you have Windows 64bit we recommend using Multicharts 64bit. The next few steps go through installing Multicharts 64 bit. If you already have Multicharts installed please jump to section 3.

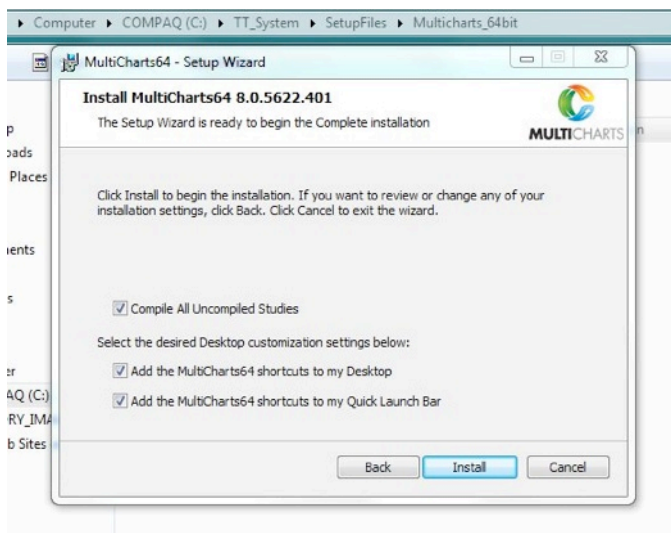
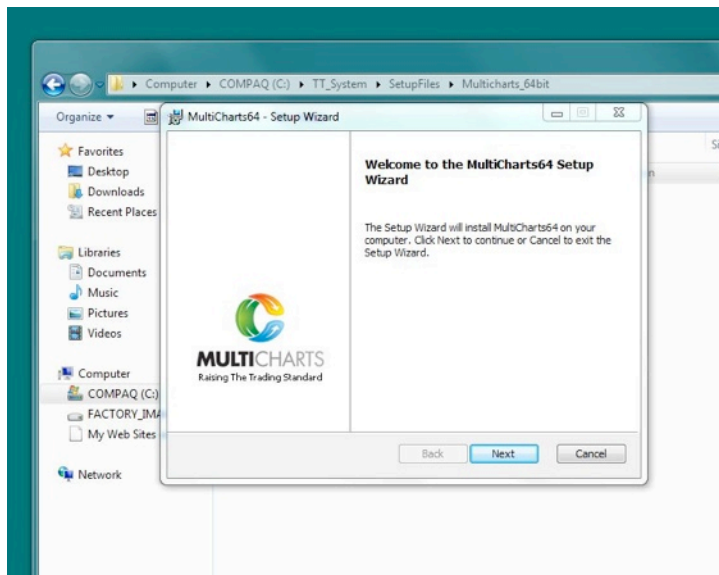
Double click on the 'Multicharts_64bit' folder to enter it.



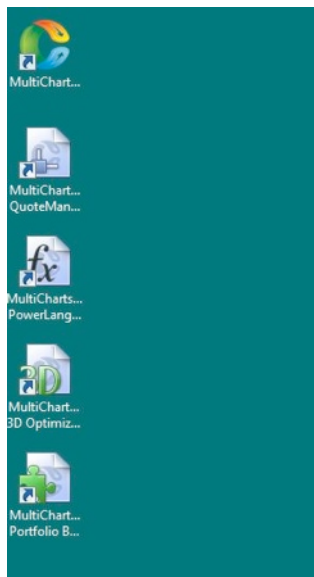
Double click on the 'multicharts.8.0.x64' file to start the Multicharts install.



Follow the onscreen instructions to install Multicharts.

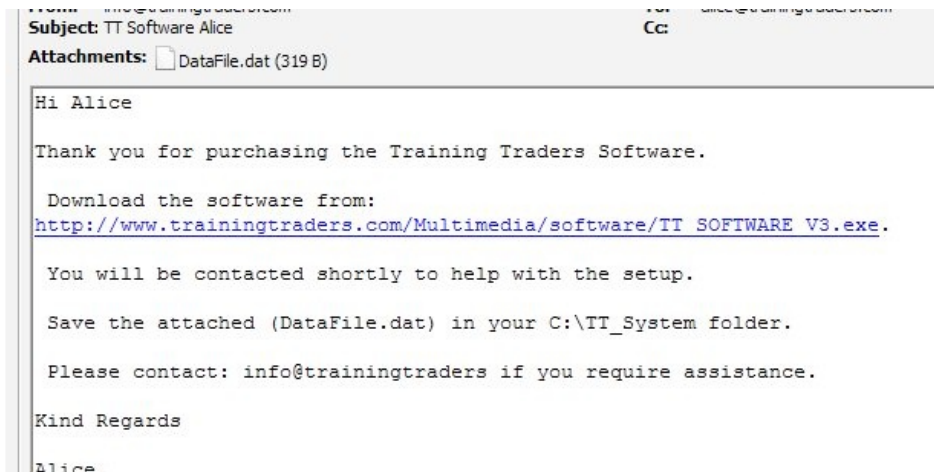


After Multicharts is installed you will have a number of icons (shortcuts) on your desktop.

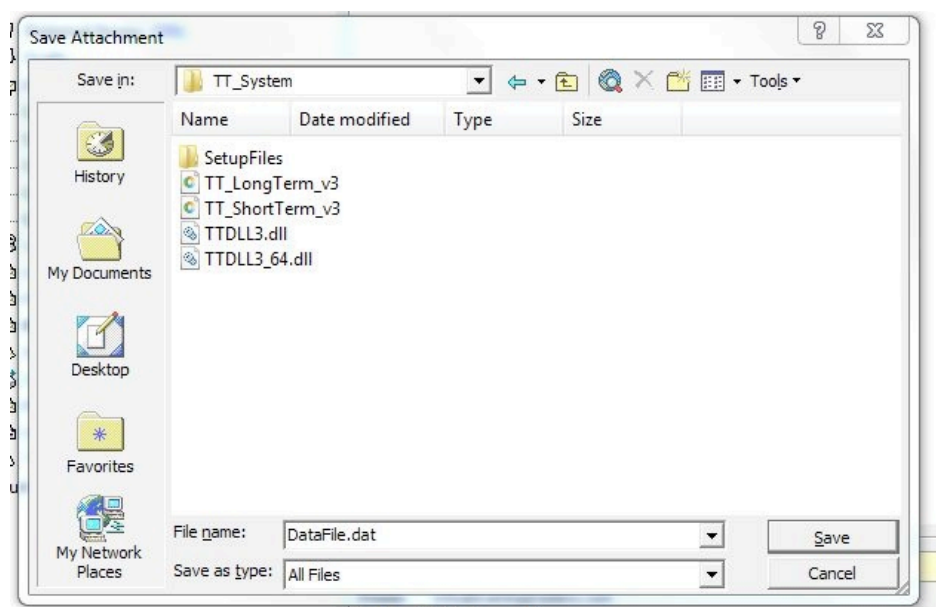


3. Saving the DataFile

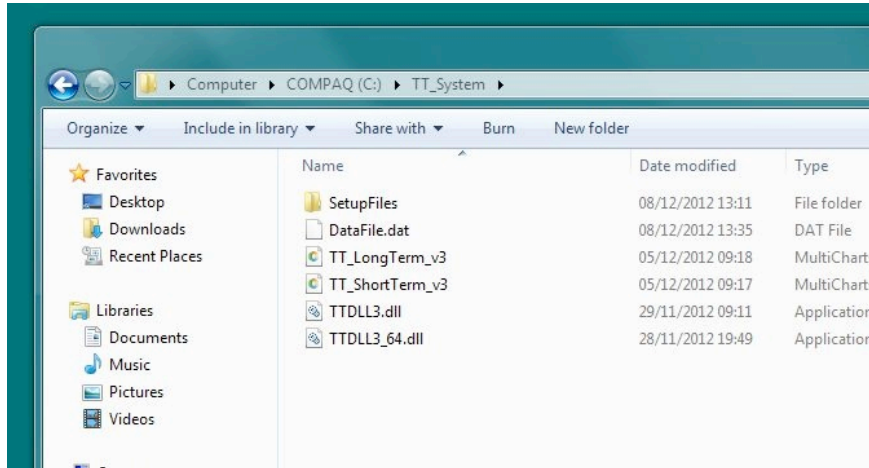
Go to the email from alice@trainingtraders.com and save the attached file in the TT_System folder (C:\TT_System).



Different email clients save attachments in different ways, this example is for 'Outlook'. Right click on the attachment and select 'Save As'

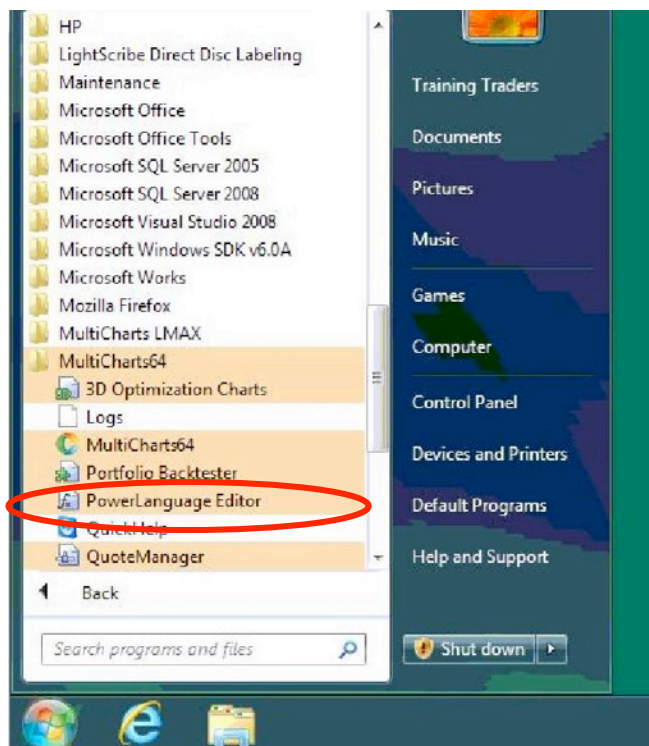
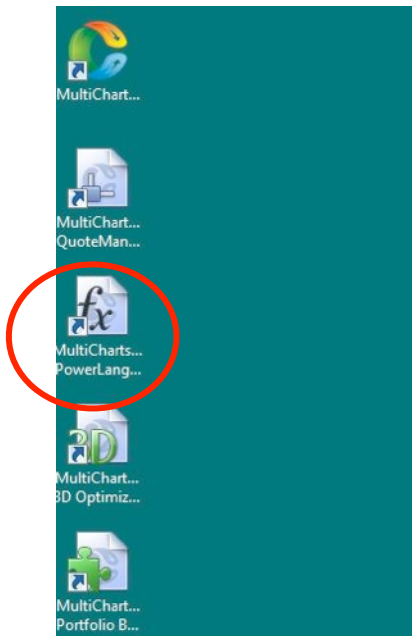


It is vital that the 'DataFile.dat' is save in C:\TT_System folder.

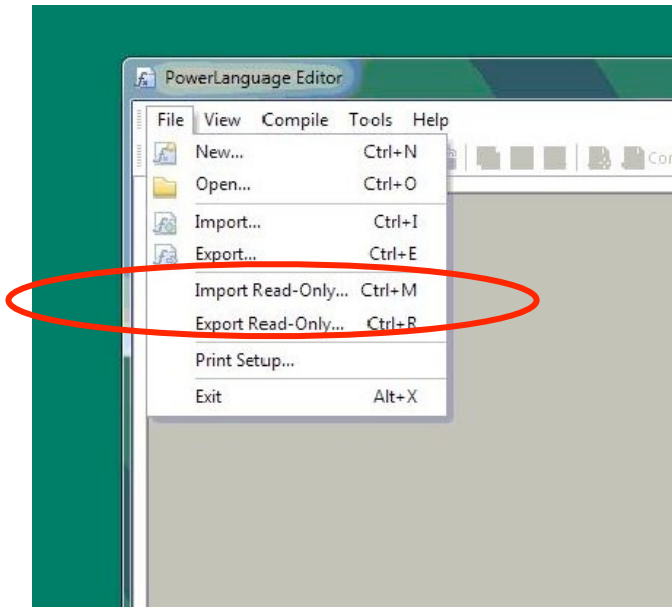


4. Importing the Training Traders software

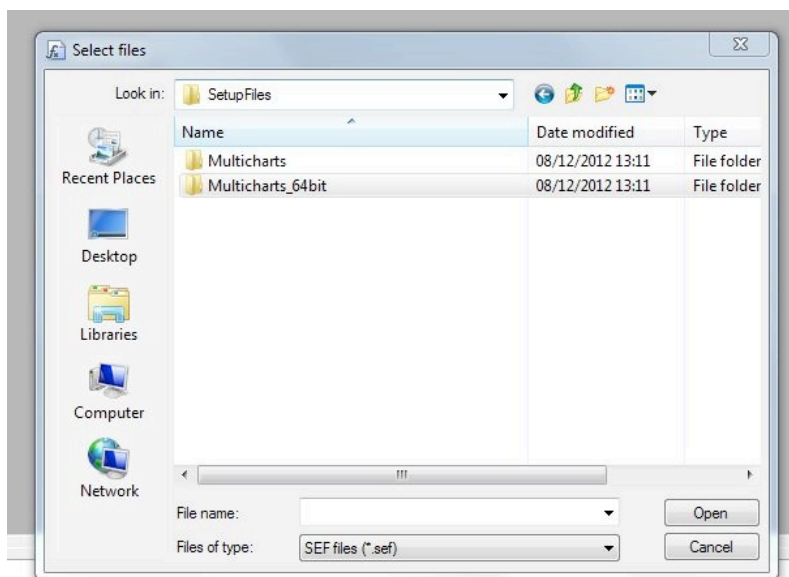
The Training Traders software is imported using the Multicharts Power Language Editor which can be started by double clicking on the desktop icon or from the Windows start menu.



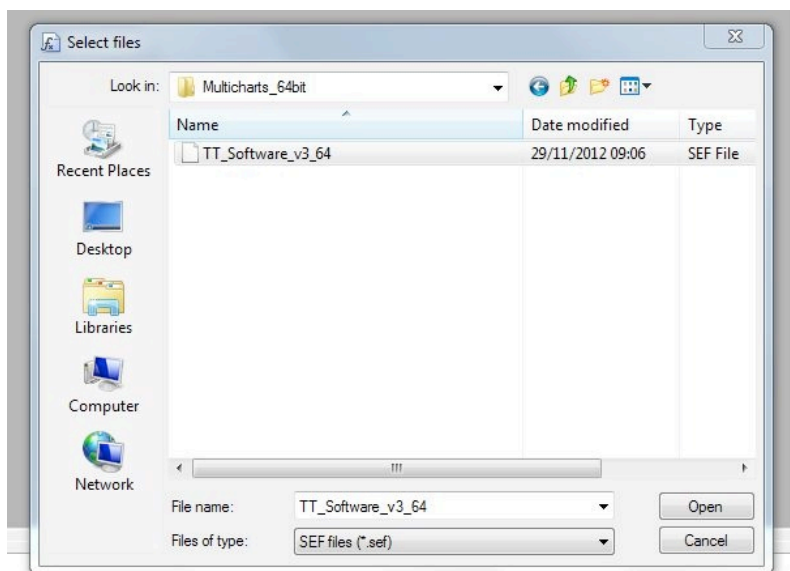
Once the Power Language Editor is running, go to the 'File' menu and select 'Import Read Only'.



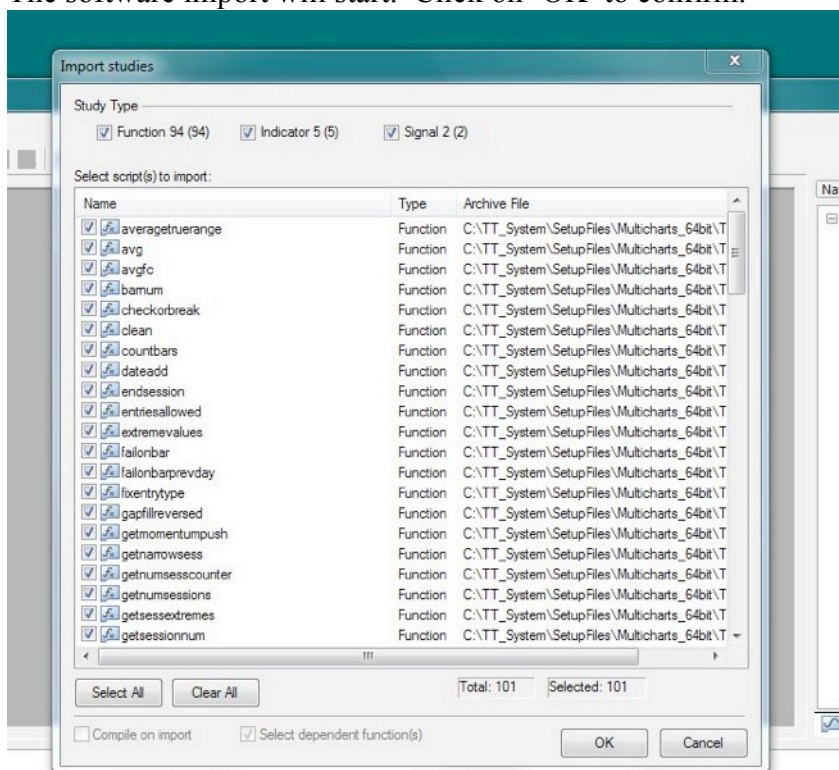
Go to the 'C:\TT_System\SetupFiles' folder and select the appropriate folder to match the version of Multicharts you have installed.



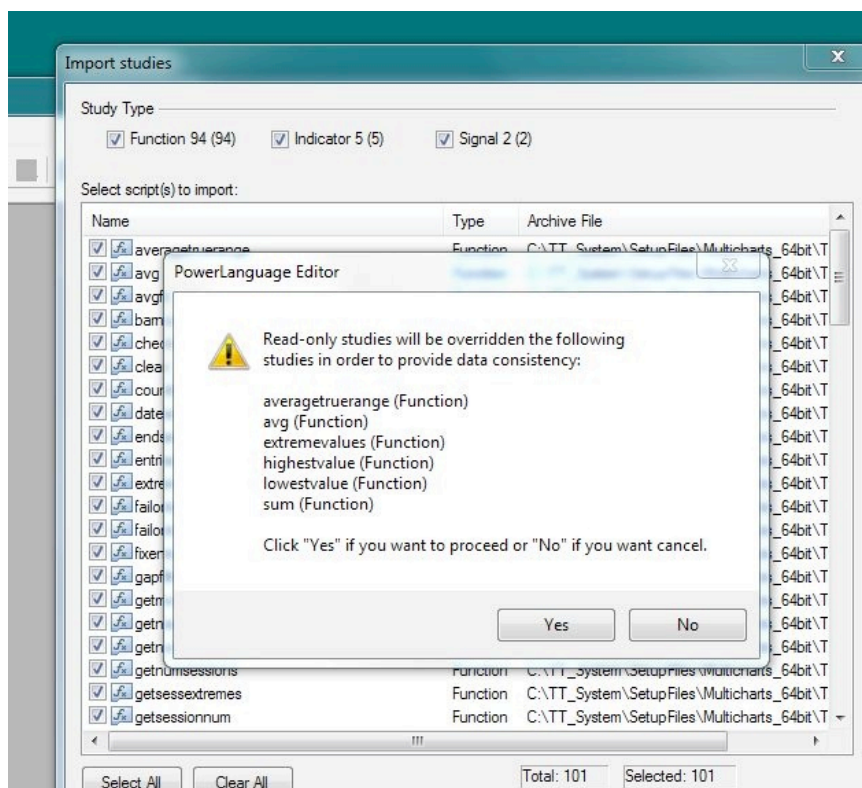
Select the TT_Software_v3_64 file (or TT_Software_v3 for the 32 bit version).



The software import will start. Click on 'OK' to confirm.



Click on 'YES' to confirm the overwrite of existing files.

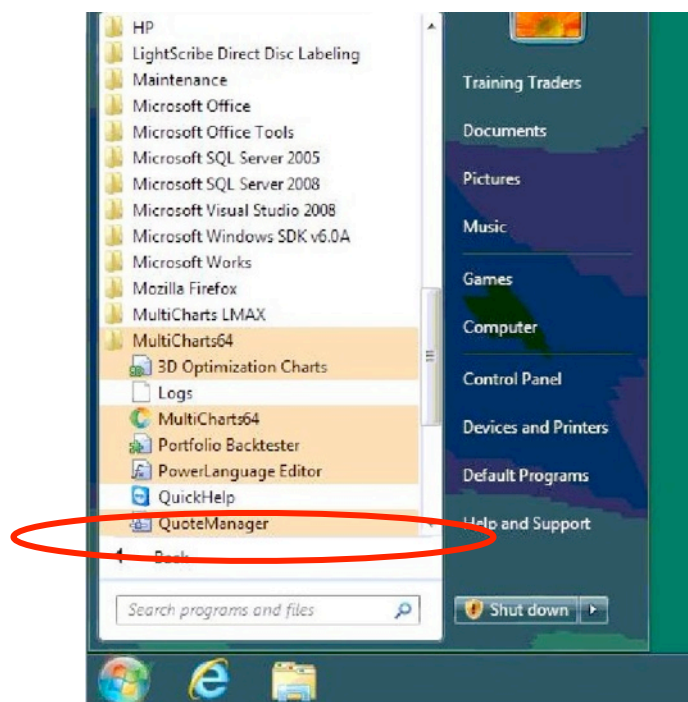
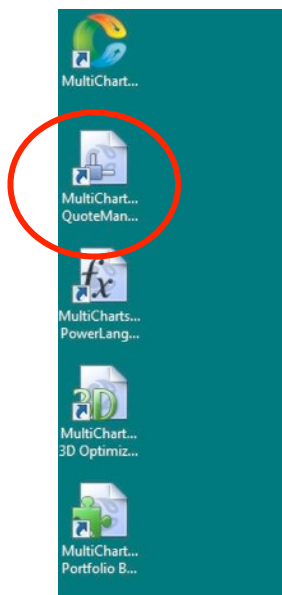


Close the Power Language Editor once complete.

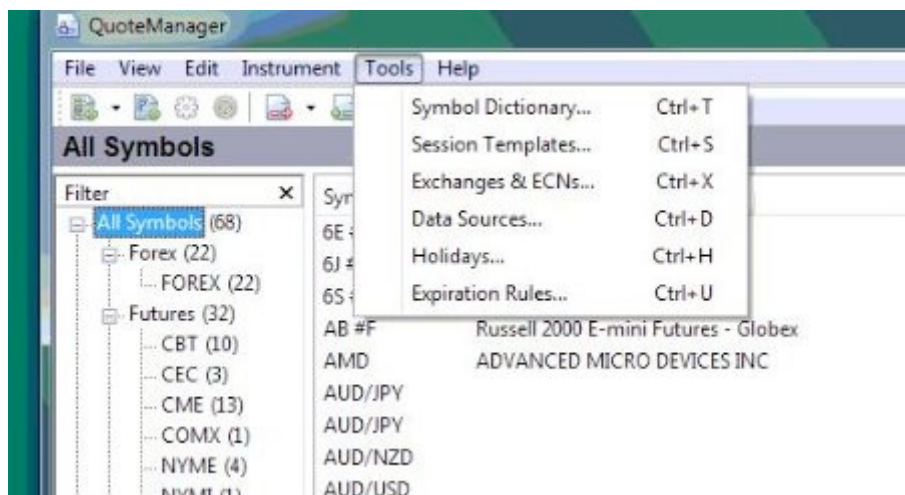
5. Configure for LMAX account

Multicharts can be setup to use a number of different data feeds, the following section shows how to configure for the LMAX data feed.

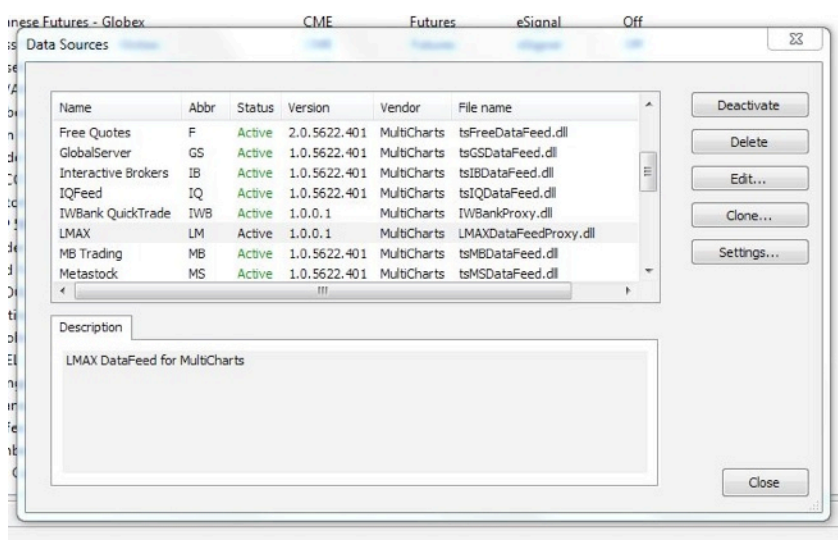
Double click on the 'Multicharts Quote Manager' icon on the desktop or run the 'Quote Manager' from the start menu.



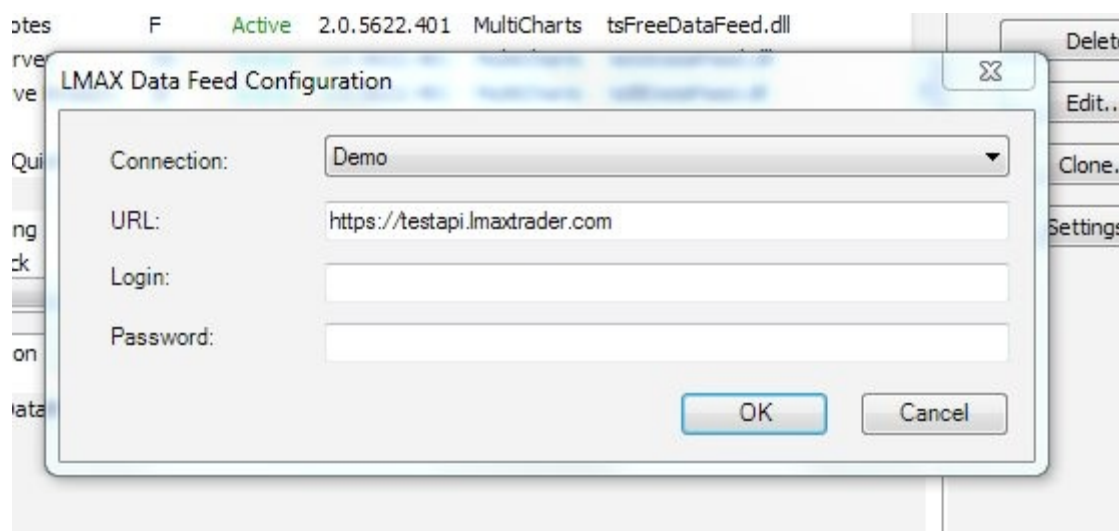
Go to the 'Tools' menu and click on 'Data Sources'.
There will be a delay of a few seconds before it starts.



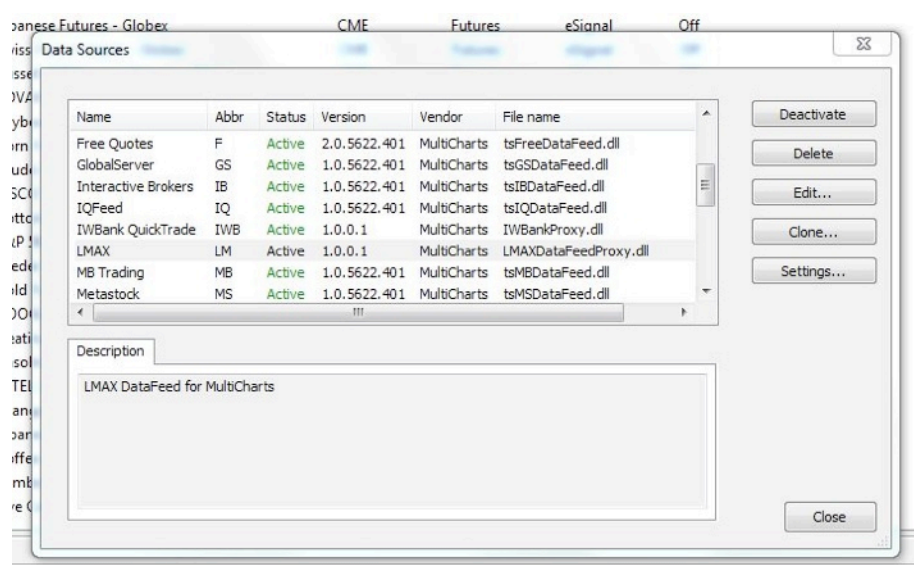
When Data Sources has started, scroll down the list and click on LMAX and click on 'Settings'.



Enter your LMAX account details and click on 'OK'

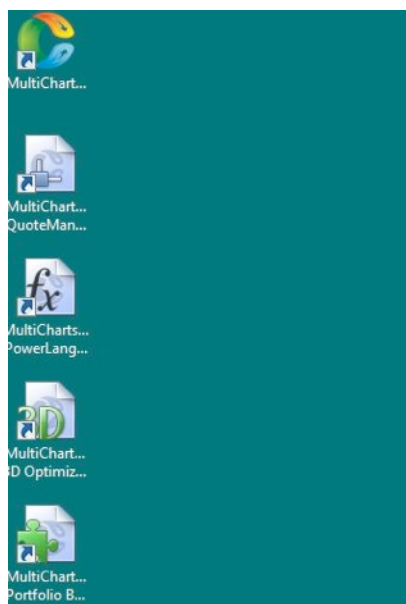


Click on 'Close' to close Data Sources

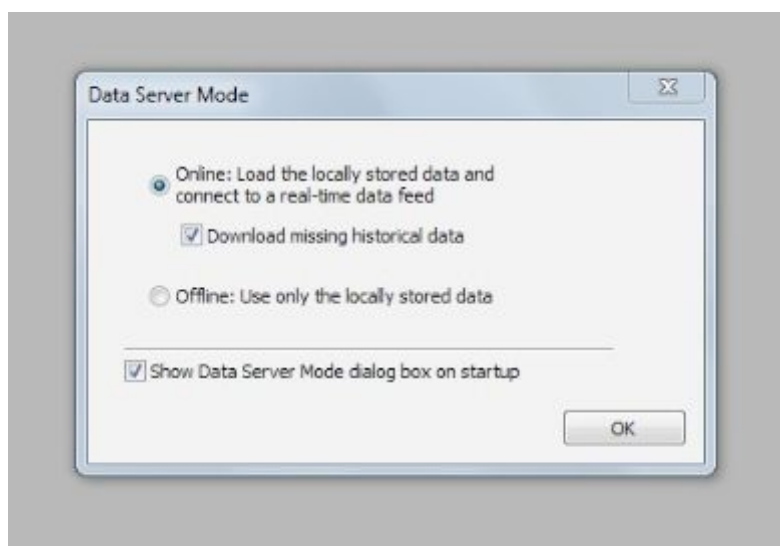


6. Multicharts configuration

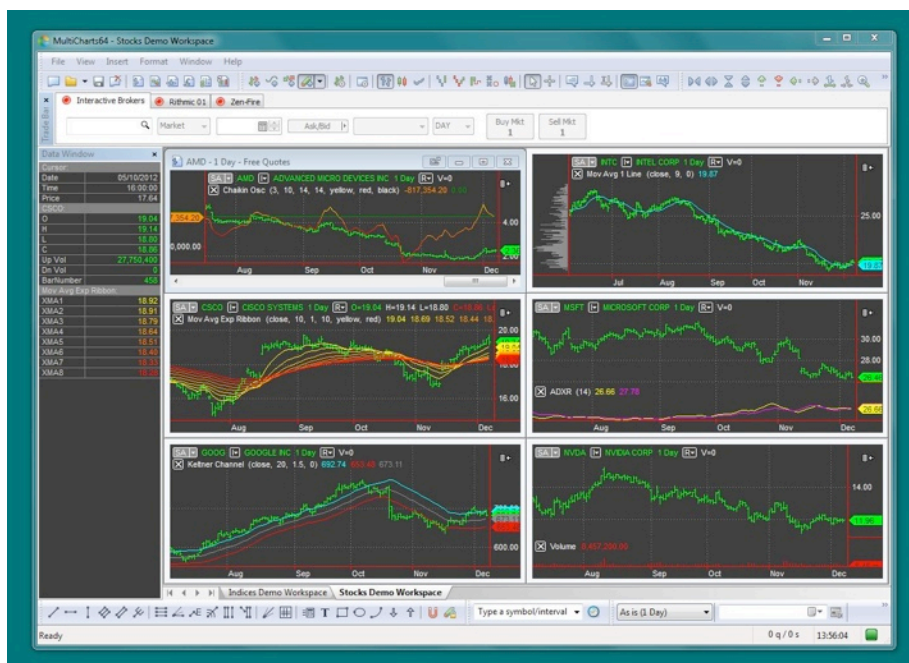
Start Multicharts by double clicking on the desktop icon



When the 'Data Server Mode' window appears make sure the 'Download missing historical data' option is ticked.



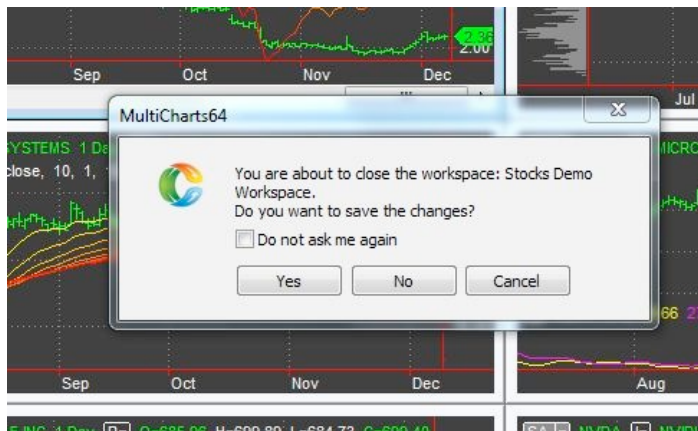
When Multicharts is first run it displays default workspaces (charts) the next couple of steps remove those and set Multicharts to load the Training Traders workspace on startup.



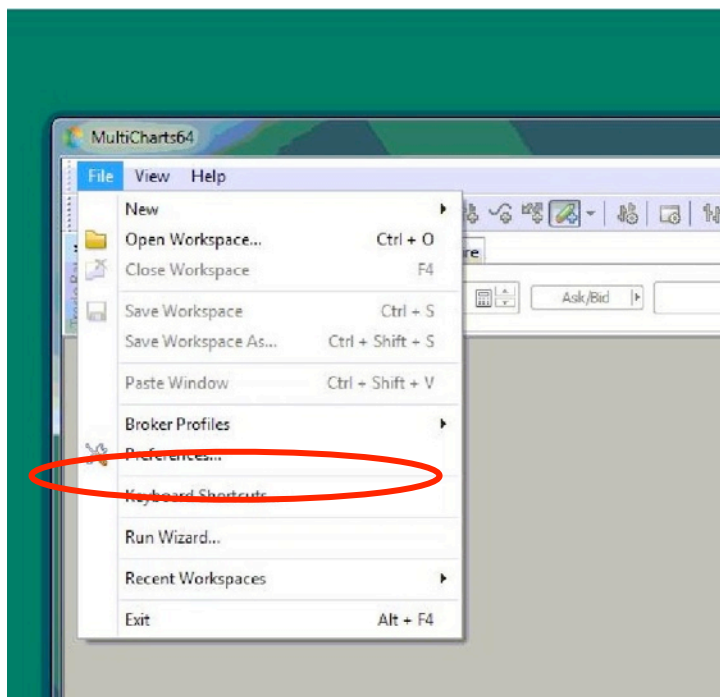
Right click on either of the workspace tabs at the bottom of the screen ('Indices Demo Workspace' or 'Stocks Demo Workspace') and select 'Close All Workspaces' from the menu.



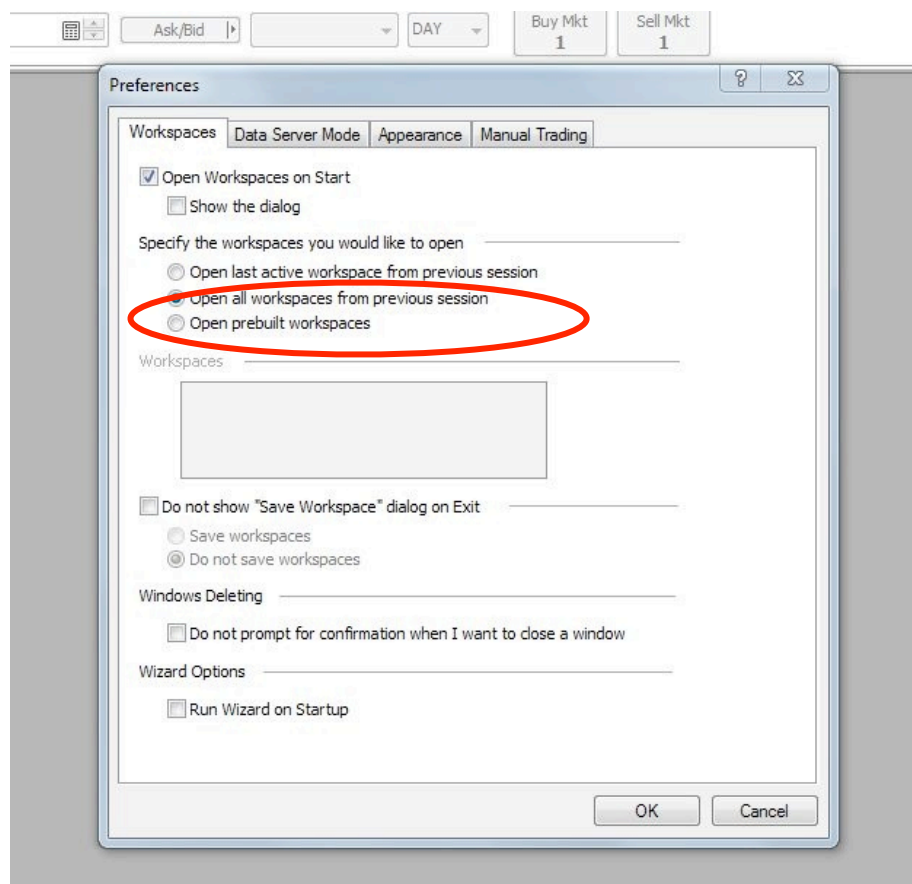
Click on 'No' so that the workspaces are not saved.



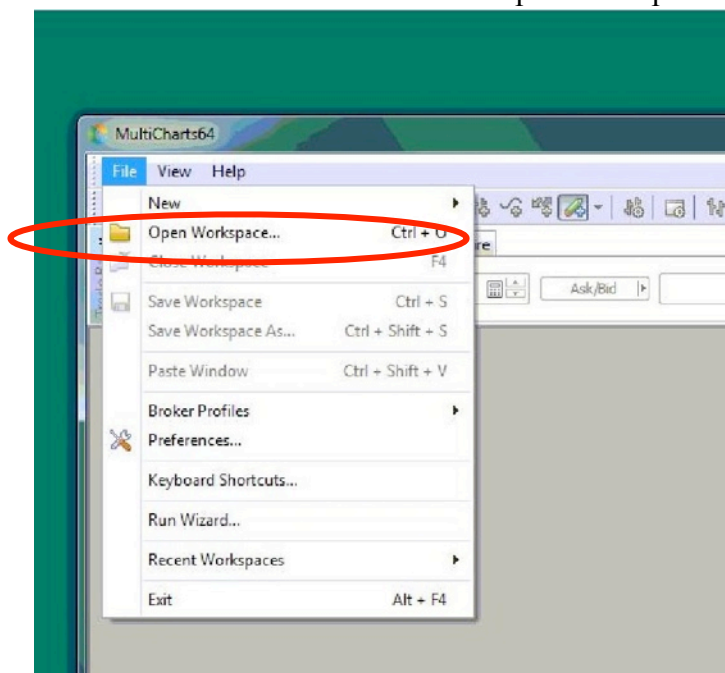
Go to the 'File' menu and click on 'Preferences'



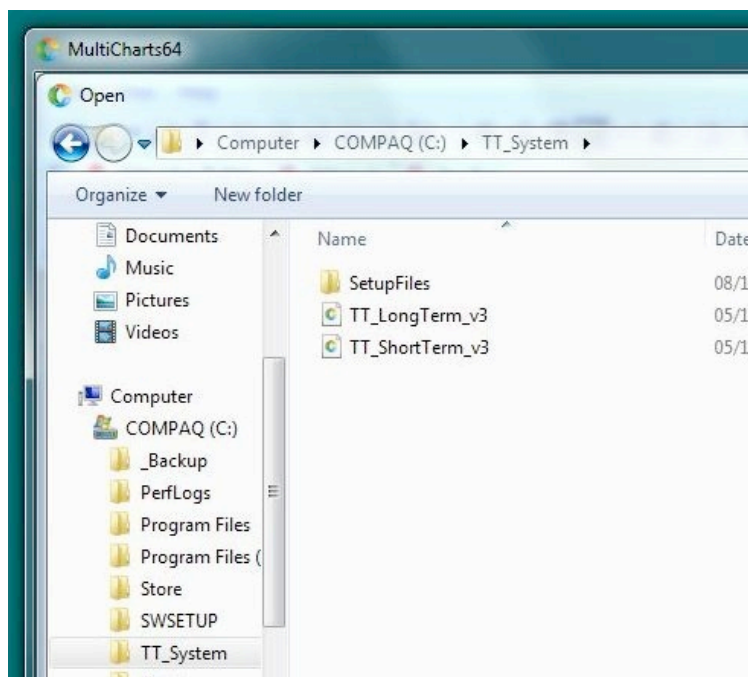
Click on 'Open all workspaces from previous session' then click on 'OK'



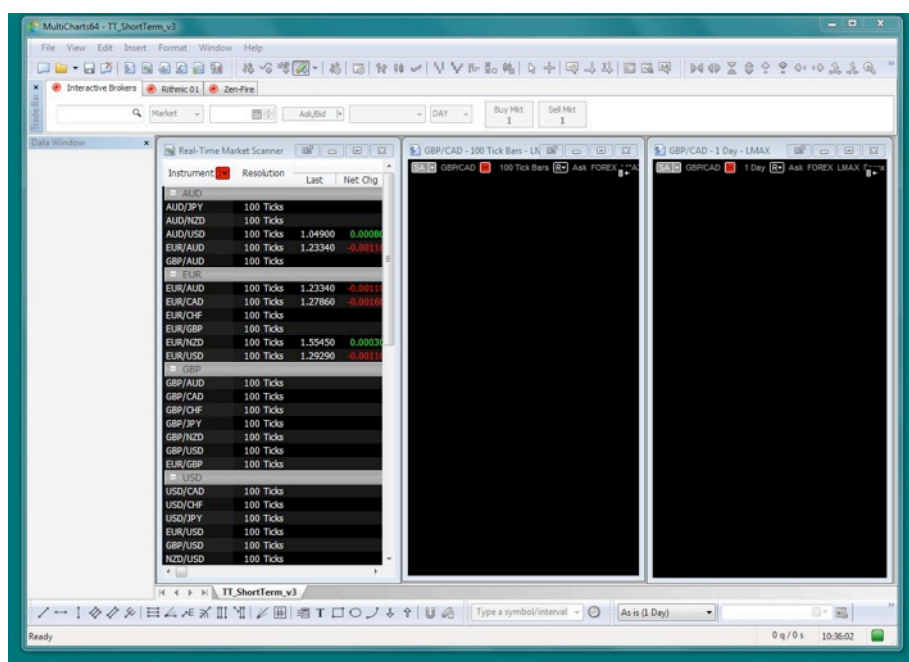
Go to the 'File' menu and click on 'Open Workspace'



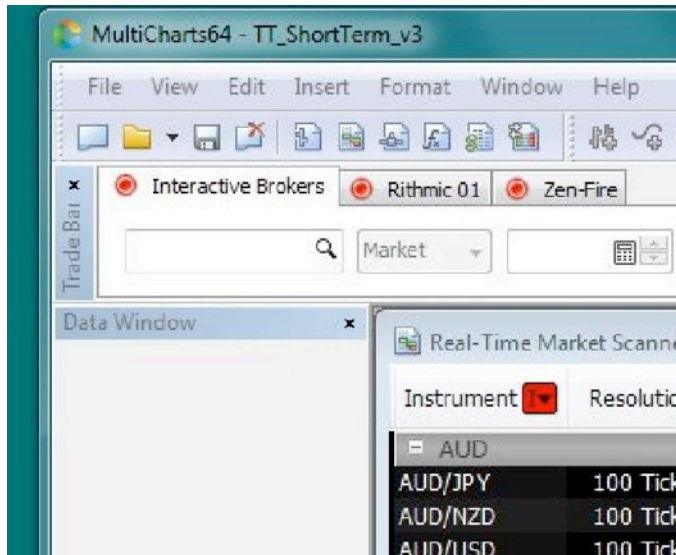
Go to the 'C:\TT_System' folder and click on the appropriate file ('TT_LongTerm_v3' or 'TT_ShortTerm_v3').



The workspace will open. The first time the workspace is run it will take several minutes (allow 20 minutes or so) for the historical data to load. Data is loaded for the past 20 days and stored, so the next time you start the charts will be up and running much quicker.



The 'Data Window' of the left side of the screen is not needed and can be removed from the workspace by clicking on the 'X' in the top right corner.



Once the data is loaded the indicators will be shown on the charts.

